



vileda[®]
PROFESSIONAL

UltraFlex

Flexible and ergonomic mopping system that pays off

New
product for
2011



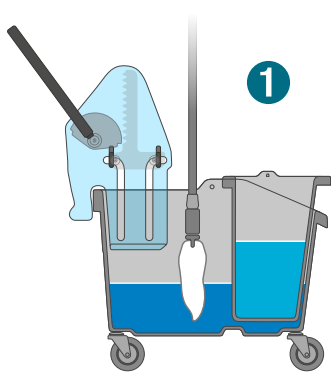
UltraFlex...

As good as wet mopping gets!

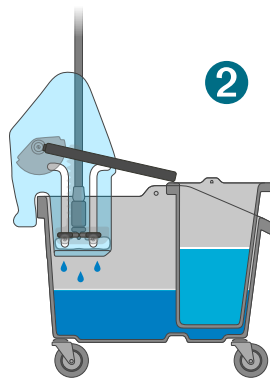
If you are looking for the most up-to-date, innovative and ergonomic bucket-and-wringer system on the market – look no further.

It's here and it's the UltraFlex system from Marino-Vileda Professional. Engineered from the ground up, UltraFlex has been designed to perform the most hygienic cleaning of floors available today!

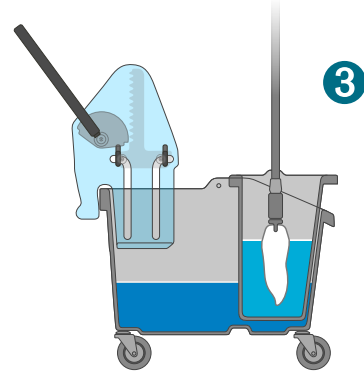
Steps to proper floor cleaning



After cleaning a portion of the floor, you now rinse your soiled mop in the dirty water compartment. This is done to remove any excess dirt from the mop before it enters the clean water compartment.



It is recommended that you wring the mop at this stage before the mop enters the clean water.



Once the mop has been submerged into the clean water, you will now wring out the mop to the desired moisture level. Continue to clean your floor, repeating steps one and two.

Top in class ergonomics

Having healthy personnel pays off in the long run, and one way of reducing wear and tear and body stress is providing cleaning tools with top class ergonomics.

UltraFlex has several features that all lead in the direction of offering your cleaning staff tools that are easy-to-handle, easy-to-use and with a minimum of uncomfortable movements.

- Extended leg design prevents excessive bending minimizing back strain
- Downpress wringer reduces the wringing force needed
- Bails and support grips for easy handling
- Adjustable telescopic handle (optional)
- Lightweight and easy-to-handle buckets

Top class economy

From the beginning of the UltraFlex development, one clear goal was to offer users unbeatable cleaning economy. The ergonomic properties are, of course, an important parameter, where a healthy cleaning staff clearly contributes to your bottom line.

More obvious and with a faster pay-back is the effective down press, which reduces water release to the floor and thereby gets your floors ready for traffic in no time. In addition, the clean water bucket configuration reduces water consumption and increases the cleaning area.

And above all – when working with UltraFlex you can feel and sense the overall high quality in every component, the basis for a long and trouble-free service life.



UltraFlex grows with your needs

Flexibility is UltraFlex's most obvious feature.

The configurations are many, and the beauty lies in that you can easily change or upgrade your UltraFlex to new levels, as your needs and demands change.

Design your optimal solution, and when times are changing – simply re-configure your UltraFlex. A walk in the park!

UltraFlex Basic - Single Bucket System

UltraFlex Basic features a large 34 litre/36 quart bucket and is the ideal configuration when the need is just an effective, regular mopping system with strength and durability at the forefront of the design.

In this configuration, UltraFlex can be put on the Marino-Vileda Professional Origo 100 and 300 trolleys as well as most janitorial carts.

UltraFlex Bucket-In-Bucket System

UltraFlex Bucket-In-Bucket System has an integrated, second clean water compartment.

The system includes two sets of colour-coded clips (red, green, yellow, blue) to easily identify clean water from dirty water and to prevent cross contamination.

The clean water bucket locks into place when in use and is easily removable for emptying and filling.

In this configuration, UltraFlex can be put on the Marino-Vileda Professional Origo 100 and 300 trolleys as well as most janitorial carts.

The bucket-in-bucket system is also ideally suited for waxing applications by the separation of water and finishing wax.

UltraFlex Ergonomic Single Bucket System

UltraFlex Ergonomic Single Bucket System offers the added benefit of extended leg design which helps prevent excessive back bending.

The large 34 litre/36 quart bucket is the ideal configuration when the need is just an effective, mopping system with strength, durability and ergonomics at the forefront of the design.

UltraFlex Ergonomic Bucket-In-Bucket System

UltraFlex Ergonomic Bucket-In-Bucket System with the extended leg design helps reduce excessive back bending and also provides an integrated, second clean water bucket.

The buckets include two sets of colour-coded clips (red, green, yellow, blue) to easily identify clean water from dirty water and to prevent cross contamination.

The clean water bucket locks securely into place when in use and is easily removed for emptying and filling.

The bucket-in-bucket system is also ideally suited for waxing applications by the separation of water and finishing wax.





Large 34 litre/36 quart bucket

The unique UltraFlex design is built upon a large 34 litre/36 quart bucket that is easily combined with the additional bucket when maximum effective cleaning is required for spacious floor areas.

Downpress Wringer -

The downward pressure style is especially designed to “more effectively” wring all mop heads and engineered to force water directly into the bucket, allowing for faster floor drying times and improved ergonomics.

Unlike foam plastic wringers, the Marino wringer is manufactured utilizing a high density polymer in a one piece construction that is stain resistant and helps prevent a breeding ground for bacteria.

If an economical alternative is required, the Marino sidepress wringer also fits the UltraFlex System.



Telescopic handle

The Marino-Vileda Professional 131599 telescopic handle (optional) has best-in-class ergonomics, as it is lightweight, easily adjusted and adapted to every user's preferences.

It's Quick-lock function, anti-slip handles with soft touch and feel and a rounded end all adds to the best in ergonomics. The handle is perfectly matched for the Snap-N-Go mop head.

Colour coded rings easily identify application areas thereby avoiding cross contamination.



UltraFlex.

Maximum performance. Maximum flexibility.



UltraFlex.

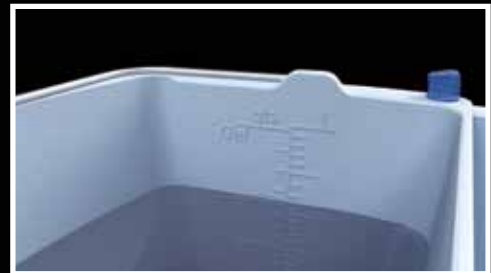
The features you want.
The options
you deserve.



Double Buckets



Extended Legs



Multiple scaling units



Colour coding system



Locking mechanism



Vileda Professional and Marino Professional – part of the Freudenberg Group

Marino-Vileda Professional provides innovative cleaning solutions and systems for professional users in various application areas, such as General Building, Healthcare and HoReCa. With sales offices in major markets, and a wide network of representatives, we are located around the world.

Vileda Professional and Marino Professional belong to the Freudenberg Group – a diversified family run global company, headquartered in Germany.

Code	Description	Size	kg	lbs	Cube m	Cube ft	Pack
133879	UltraFlex Bucket with Castors and Downpress Wringer	53 x 37 cm / 21 x 14 ½ in	12.17	26.78	.0106	3.76	1
N/A	UltraFlex Bucket with Castors and Sidepress Wringer	53 x 37 cm / 21 x 14 ½ in	8.21	18.06	.0106	3.76	1
133878	UltraFlex Bucket with Castors - 34 L / 36 Qt.	53 x 37 cm / 21 x 14 ½ in	2.59	5.69	.0106	3.76	1
136022	UltraFlex Bucket with Extended Legs and Downpress Wringer	53 x 37 cm / 21 x 14 ½ in	12.80	28.17	.0106	3.76	1
N/A	UltraFlex Bucket with Extended Legs and Sidepress Wringer	53 x 37 cm / 21 x 14 ½ in	8.84	19.46	.0106	3.76	1
136023	UltraFlex Bucket with Extended Legs	53 x 37 cm / 21 x 14 ½ in	3.22	7.09	.0106	3.76	1
136021	Bucket-in-Bucket (Clean Water Bucket) - 15 L / 16 Qt.	36 x 36 cm / 14 x 14 in	.87	1.93	.05	1.76	1
136020	Extended Legs (Ergonomic)	17 x 11 cm / 6 ½ x 4.2 in	.63	1.39	.05	.08	1
131599	Snap-N-Go with Vileda telescopic handle and colour rings (BRYG)	100 x180 cm/ 40 x 71 in	4.90	10.80	0.01	0.47	12/1



Helping you make a difference.

Marino Manufacturing Ltd.

59 Talman Court, Concord, ON, L4K 4L5 Canada

Tel: (905) 669-9949, Fax: (905) 669-5750, Toll Free: 1-800-265-6267

www.marinomop.com, www.vileda.com

A Company of the
Freudenberg Group 